

ANNUAL REPORT

1ST JULY
2023 - 30TH
JUNE 2024



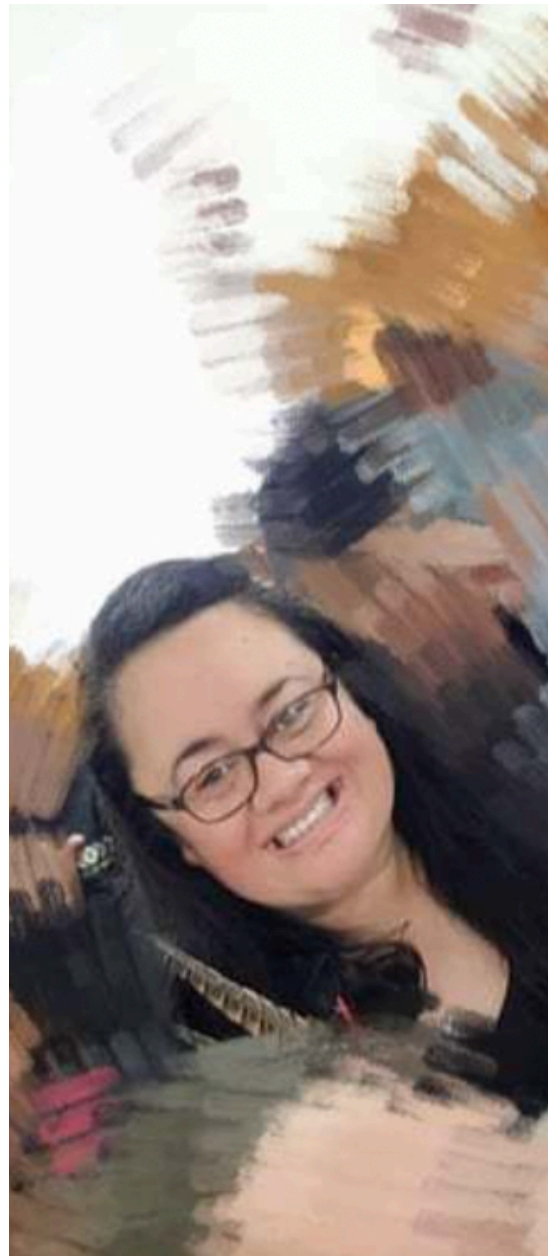
A MESSAGE FROM THE DIRECTOR

Tēnā Tatou Katoa

This is an interim annual report designed to begin to collate the years worth of work before the Annual General Meeting that will be held in November 2024. This report gives an overview of the work completed by The Arts Village Trust over the period of 1st July 2023 - 1st July 2024.

Kellez McManus

DIRECTOR/TE MANA WHAKAHAERE



CONTENTS



- 02 OUR OUTPUTS
- 03 EVENTS & MARKETS
- 04 COMMUNITY EXHIBITIONS
- 05 KAUPAPA
- 06 WORKSHOPS
- 07 PROGRAMMES
- 08 COMMUNITY WELLBEING
- 08 INDIVIDUAL EXHIBITIONS
- 10 ART USER GROUPS
- 11 MANAWHENUA PARTNERSHIPS
- 12 SPONSORS & STAKEHOLDERS
- 13 STRATEGIC FOCUS

02 OUR OUTPUTS



03 EVENTS & MARKETS

Haututū Day



This is an annual open day at The Arts Village for all the community to attend, where the community can enjoy participating and be a real Haututū in a range of art disciplines, as well as music and kai. The next open day will be held in September 2024.

Kōanga Markets



One of our interns created an idea for a new market to help capture a new range of stallholders working alongside established stallholders. A great community market that saw whakairo, ringatoi, Rongoā practitioners, and Māori digital artists. The plan is to one day hold a Māori Art Market. Held in October every year.

03 EVENTS & MARKETS

Te Pō Kitakita



A 3 hour Matariki celebration for the whole community held every year during Matariki. We bring a variety of important Māori traditions to help everyone learn the importance of Matariki. We had kapa haka, cook island dancers, a local Māori band and solo Māori artists; art activities such as building your own waka to bring kumara back from hawaii; Manu Aute making. We gave out hot chocolate, hangi, fry bread, poi kits and Matariki activity books. This event is always well received and well attended.

Summer Festival



The Summer Festival is a community-focused annual event which is a celebration of the arts while showcasing local musicians, artisan makers, and our beautiful city Rotorua. There is a wide array of locally made art and craft, with delicious food and music on Rotorua's Outdoor Community Stage, as well as free art activities for children. This free event, held in December every year, attracted an estimated 1,200 people, 54 stallholders, 24 musicians and 8 volunteers.

03 EVENTS & MARKETS

Art in the Park

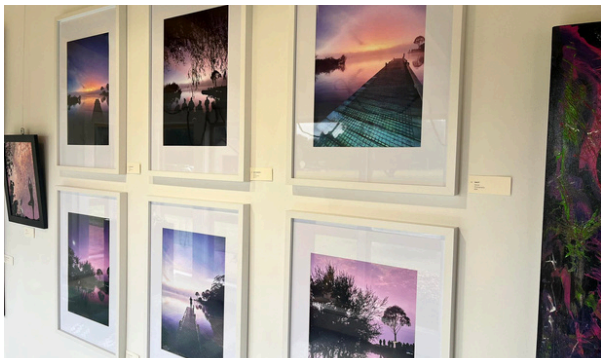


A free family focused event run for the benefit of the community, held annually in the Government Gardens.

This event showcases local artists & musicians, giving opportunities for artists to interact with the public and display & demonstrate their work. This year's Art in the Park saw 87 stallholders and 18 musicians and performers. An estimated number of 6000+ people came to the event.

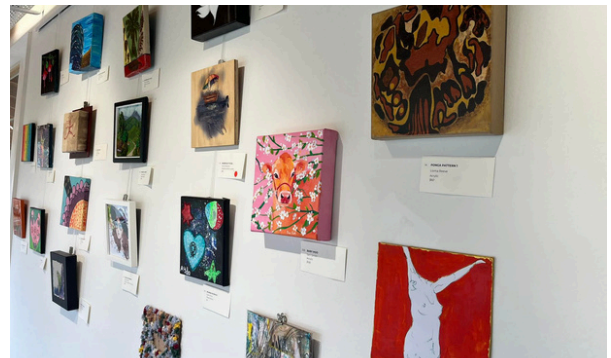
04 COMMUNITY EXHIBITIONS

Under The Stars



Under the Stars is an exhibition held during the week of Matariki. Rotorua artists are encouraged to submit and sell their works about Matariki in this exhibition. Artists from high schools have begun to submit their work. This show grows popular each year with submissions doubling in its second year.

The 200 Show



The 200 show is one of our most loved community exhibitions where the artwork must not measure more than 200mm and must not be priced more than \$200. Each year we get well over 200 submissions, safe to say this is one of our most anticipated shows.

05 KAUPAPA

To Tatou Heke Mai



We held a Rangatahi Ahurei, two days of back-to-back workshops in March 2024. Workshops included Kapa haka; Lego; Denim; Uku; Song Composition; Printing/Lino; Cutting; Digital; Screen printing; Kawakawa balm; Theatre; and Jewellery. Local artists were paid to run workshops. We collaborated with the Rotorua Youth Centre and Digital Natives Academy to run workshops and select the children who would attend.

Matika! Maranga!



We hold a Waitangi Art Exhibition each year. Last year we held Waitangi, Why Tangi, Why We Tangi, where 22 Māori artists gathered together to cry and heal with the rest of the community. This year we held Matika Maranga, an exhibition to challenge the narrative and redetermine the Treaty principles. This was held at the the Rotorua Public Library, and then at The Arts Village.

05 KAUPAPA

Maramataka & Te Ro



We collaborated with local artists Richard Francis and Jade Kameta to deliver a workshop to the Rotorua community on “Maramataka.” A free event, we got an overview of the Maramataka and how it affects our everyday lives. The building was full with people in the hallway who could only just hear the korero but wanted to take the time to learn about the Maramataka. In 2024, this will take place during July. At the same time, we collaborated with Pikiao Runanga to deliver Koeke Te Reo classes.

06 WORKSHOPS

Rotorua Potters Group



The Rotorua Potters Group's purpose is to foster the current and next generation of potters and Uku artists in Rotorua. The Arts Village and The Rotorua Potters Group collaborate often to bring affordable and engaging workshops for people of all ages and backgrounds. The Potters Group are a huge part of our Matariki celebrations connecting the stars to uku making putangitangi and koauau to tell local narratives.

Workshops for All



The Arts Village hosts and delivers a diverse range of workshops and programmes to support people and their artistic curiosities and skills. Workshops such as kaupapa denim jackets, making whenua paint, kawakawa balm, life drawing of therapy dogs, monthly kids art sessions, pastel portraits and harakeke paper making.

07 PROGRAMMES

Holiday Arts Academy & Kids Drop-in Sessions



We run three Holiday Arts Academies 3 times a year in the school holidays. They run for 4 days for 2 weeks per term for ages 8-12 years. This year, we hope to develop an MoU with work and income to extend our programme to those on lower income levels.

Internships



We run short term, 40 hour a week internships every year with funding through The Rotorua Trust. The interns receive contracts and job descriptions, and work on a particular area of the organisation to gain work experience within an arts organisation. We have had great success with this work, with our interns developing new projects and ideas, and then going onto either study or work in other arts organisations.

07 PROGRAMMES

Open Summer Residencies



Each year over the summer, we choose four up and coming young artists, preferably local, who will be given a studio and access to the Arts Village over a 6 week period to hone their skills. We choose artists based on their skills and aspirations for art as a career choice. We hold an opening and closing night where they get to showcase and sell their artwork. They also hold workshops open to the community. This is funded through a grant from The Rotorua Trust.

Volunteer Support Group



Around 208 volunteers give their time to support Arts Village activities. After every event, our team holds volunteer appreciation days. At these events we share kai and create art together. Some of the volunteers have been coming through as part of a wahine empowerment kaupapa, where they learn skills that they can take to future mahi.

08 COMMUNITY WELLBEING

Art & Wellbeing Support Group



An regular 8 week programme where 10 participants meet and discuss a different part of Te Whare Tapa Wha and how to incorporate it into their chosen medium. 50% of the sessions had speakers such as Ben Tainakore-Curtis, who is a counsellor, and Bianca Taute, who is a psychologist. At the end the group delivered an exhibition that spoke to their personal journeys through art.

Social Services Collaboration



Over the last couple of years, we have been reaching out to social service providers to identify the art needs and wants of the communities that they work with. We have worked with a range of providers such as Kimiora Trust and Maatua Whangai to bring art to them in their communities. This is an area we want to develop further this year.

08 COMMUNITY WELLBEING

Wearing Wellness



A six-week Kaupapa that focuses on mental health and what that looks like for the individual. Each participant created an art piece on a piece of clothing. The group would meet weekly and share kai and experiences. At the end of the 6 weeks they opened their exhibition of kakahu such as hats and coats that became wearable arts that spoke to their wellbeing.

Marae Projects



An 8-week project to help the people of Taheke Marae beautify their wharekai. We worked with the whanau to complete 2 panels that over 100 people participated in. This year we would like to continue and expand these projects in other marae. Our Community Wellbeing drive has been funded for the last 3 years through generous grants from the Lotteries Community, Department of Internal Affairs.

08 COMMUNITY WELLBEING

Schools Collab

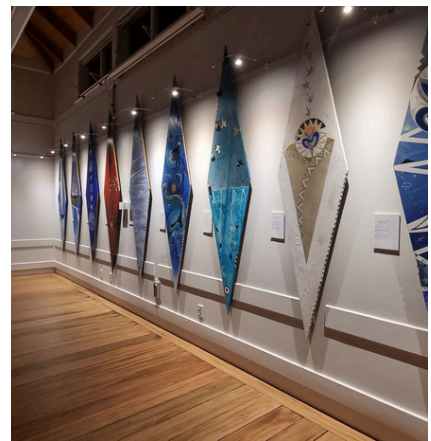
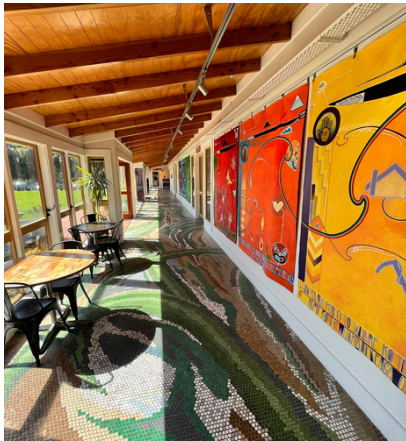


Our Creative Wellbeing Coordinator travelled on a noho marae with Rotokawa Kura. Throughout the four day noho,, she delivered mahi toi through different art mediums.

We have also collaborated with Lakes High and Mokoia Intermediate students, who held an exhibition at the Arts Village in 2023. Through this collaboration some of the students from Lakes High applied for the residency programme. One of them went on to study art at university. Working within schools to provide career opportunities of talented artists is an area we want to grow in the next year.

09 INDIVIDUAL EXHIBITIONS

Individual Exhibitions



In addition to the above events, workshops and programmes, we have a full exhibition programme including working with artists, ringa toi and local groups to deliver a strong exhibition programme across our three gallery spaces. These exhibitions range from showcases of groups of enthusiasts, mana whenua and community artists, to established artists and practitioners.

10 ART USER GROUPS

Art User Groups



We are also used by a number of community groups and casual building users who lease or use the space to practice/hone their craft; and build their own communities with shared interest areas. Groups include the Potters Group, floral artists, painting, children's art, children's music, public speaking groups, writing groups, and more. We also host many casual bookings and classes here including mahi rāanga, ukulele, visual art, and photography. Some businesses also use the premises, paying a higher rate to effectively subsidise community use.

MANA WHENUA PARTNERSHIP



One of the kaupapa of the past few years has been to pursue a meaningful relationship with manawhenua. We have begun to deliver content to not only support Māori but also to support others who want to engage and learn about Māori culture. We believe that when you open the door to Māori you open to door to everyone, cultivating a more accepting, educated and inclusive community.

Over the past two years we have increased the amount of projects working alongside tangata whenua and mana whenua. We held a hui named “Hui Ringatoi” specifically aimed at Te Arawa ringatoi, inviting them to the Arts Village space. The kōrero was that these artists never felt like the Arts Village was a place for them even though they could give a history of the whenua. The them, the Arts Village was for anybody but them. Since our hui, we have had a more resounding response to the kaupapa that we hold here and the presence of mana whenua is more noticable than ever before.

We have begun to build a relationship with manawhenua by engaging with Ngāti Whakaue Pae Tapu. We met with NWPT to discuss an ingoa Māori , one that reflects the relationship that led to the whenua being gifted for the purpose of the Arts Village building. This is a work in progress.

SPONSORS & STAKEHOLDERS

We want to express our heartfelt gratitude to our major sponsors. The work that we do to promote the arts is only possible through the generosity of our funders:

THANK YOU
TO OUR FUNDERS

The **ARTS** VILLAGE



The **ARTS** VILLAGE

1240 Hinemaru Street, Rotorua, 3010 | 07 348 9008 / office@artsvillage.org.nz
www.artsvillage.org.nz

STRATEGIC FOCUS 2024- 2025

1 To prepare for growth by setting the Critical Success Factors in place - governance, staff, systems, marketing, building and vibe

2 To explore and implement a social enterprise model to reduce reliance on funding bodies

3 A refocused and defined Community Creative Wellbeing Programme to increase art access to vulnerable communities and talented Māori artists

4 To research other multidisciplinary arts organisations around the country and the world for innovative thinking